



APARTMENT 83

# CENTENARY HOUSE

*Digital Brochure*

# Table of CONTENTS

01	Welcome
02	Check in & Check out
03	House Rules
04	Amenities
05-06	FAQ's
07	Safety & Security
08	Local Transport & Parking
09-11	Frequently Asked Questions (FAQ's) Local Area & Attractions

---





# *Welcome* MESSAGE



We're thrilled to have you as our guest. Whether you're here for business or leisure, we hope you find everything you need for a comfortable and enjoyable stay. This guidebook is designed to make your experience seamless, offering helpful information about the property, amenities, and local tips.

If you have any questions or need assistance, don't hesitate to reach out.

Contact Details:

WhatsApp us on: 07720629022

Email: [luxusresidences1@gmail.com](mailto:luxusresidences1@gmail.com)

*Enjoy your stay in the heart of Leeds!*

# CHECK-IN/CHECK-OUT *Information*

Check in: 3 P.M.

Check out: 10 A.M.

## Early check-in/Late check-out

Can be granted upon availability. Please contact us to request option [possible extra fees]

### Check-In Procedure:

- The apartment is located on the third floor, apartment no.83
- Use the code given to enter the building, once you enter walk through past the lobby and enter the first door on your left.
- Follow the stairs up to flat 83.
- The lockbox is located at the side of the apartment door.
- Please be mindful of noise to avoid disturbing the neighbours.
- The lockbox code will be sent to you shortly before your arrival.
- One key will be provided at the start of stay, which must be returned, failure in doing so will result in £50 charge per key.
- If you require any additional keys, please contact us. Penalty applies to all keys

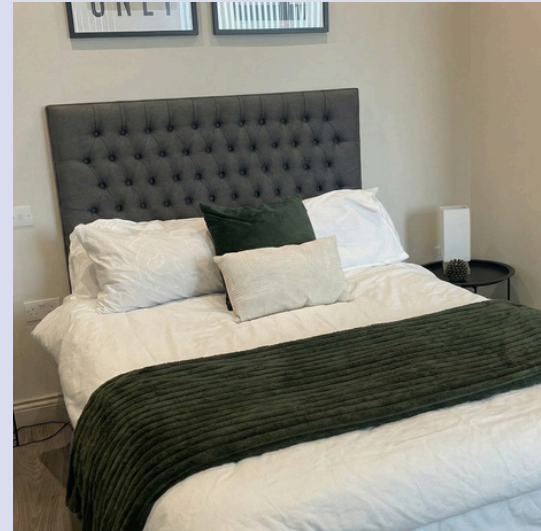
### Check-Out Procedure:

- Turn off all electrical appliances (e.g. ovens, washing machine, heating, lights, lamps, TV, microwave, toaster)
- Close all running taps.
- Ensure all windows are closed and locked.
- Lock the door securely.
- Insert the key back into the lockbox and scramble the numbers.
- Report any damages or issues by contacting us directly before check-out, so we can resolve them promptly. Failing to do so can result in damage charges.

# *Our* HOUSE RULES

To ensure a comfortable and pleasant stay for all our guests, we kindly ask that you follow these simple house rules. They help us maintain the quality of the property and ensure everyone has a peaceful experience.

Thank you for your understanding and co-operation!



- Please remove dirty shoes at the door to protect the carpets.
- Keep the property clean and in the same condition as when you arrived.
- No smoking or vaping anywhere in the building.
- No pets allowed.
- No parties, loud disturbances, or noise nuisances are permitted.
- Quiet hours - 10pm - 7am
- Maximum occupancy is 2 people, and this should not be exceeded.
- Ensure all rubbish is bagged up ready for collection before check-out.

*Respect the Space  
and Enjoy Your  
Stay!*

# *Available* AMENITIES



- **Wi-Fi:** High-speed internet access.
- **Smart TV:** With streaming services (e.g. Netflix).
- **Toiletries:** Shampoo, conditioner, body wash & hand soap.
- **Fresh Linens & Towels:** Provided for all guests.
- **Fully equipped kitchen:** Fridge, oven, microwave, kettle, toaster, utensils, cookware.
- **Coffee/Tea Maker:** Kettle with complimentary tea, coffee, and sugar.
- **Washing Machine:** Laundry facilities with detergent provided.
- **Iron and ironing board.**
- **Cot** (available upon request).
- **Off-Street Paid Parking**
- **Fitted Wardrobe/Storage Space.**
- **Dining Area:** Seating for meals.
- **Smoke/CO2 Detectors:** Safety features.
- **Cleaning Services:** Available upon request.
- **Welcome Pack:** Complimentary chocolate, water or essentials.

# *Safety &* SECURITY

---

## FIRE ALARM OPERATING INSTRUCTIONS

1. Upon hearing the fire alarm, follow the procedures shown on the fire action notice.
2. Investigate zone as indicated on the control panel to ensure there is no fire/smoke.
3. In the case of a fire, call the fire brigade on 999.  
Only silence /reset the alarm if it is a false alarm or the fire has been extinguished.
4. On the big panel press silence /resound once only and wait ten seconds for sounders to stop.
5. If all is clear, press reset on the big panel.
6. In the event that the fire alarm wont reset, please contact and leave a message and someone will call you back.



---

## FIRE DOORS

Residents must ensure:

- Fire doors are to remain closed when not in use
- Residents and visitors do not tamper with fire doors or self-closing devices
- Any faults or damage is immediately reported.

*Respect the Space  
and Enjoy Your  
Stay!*



## Leeds Train Station

15 minutes walk away

Links to all of UK



## Bus

Walking distance

The nearest stops are Merrion Street Temp Stop F (4 mins walk away) and the Victoria Bus Stop (5 mins walk away).



## Car

There are 2 car parks located nearby that charge between £4-10 to park for the full day depending on whether it is a weekday or weekend.

Here are the locations :

<https://share.google/DmK6rye3G2XhnheMw> and

<https://maps.app.goo.gl/bC9LWoDLrtq3jddv6>



## Walking

The best way to explore Leeds City Centre! Most attractions are within walking distance.



## Leeds Bradford Airport

8 miles

With Leeds Bradford Airport just a short drive away, international guests can enjoy convenient access to Leeds City Centre, making your travel experience seamless and stress-free.





## Leeds City Centre

0.4 miles - 3 mins walk

A vibrant blend of historic charm and modern elegance, offering a delightful mix of boutique shopping, renowned dining, and cultural attractions.



## Trinity Leeds

0.5 miles - 9 mins walk

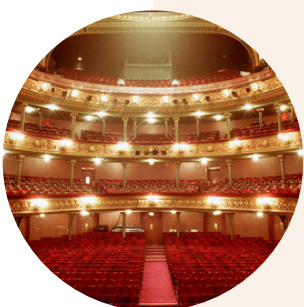
Trinity Leeds Shopping Centre in the heart of the city. Explore top shops, dining, and exciting events all under one roof.



## First Direct Arena

0.5 miles - 8 mins walk

Hosting an array of concerts, sports events, and live performances throughout the year. Its modern design and excellent acoustics provide an unforgettable experience for music lovers and event-goers alike, making it a must-visit destination during your stay!



## The Grand Theatre & Opera House

0.2 miles - 4 mins walk

The most magnificent of leading ladies, the 'Grand Old Lady of Leeds' has been entertaining audiences since 1878 with the best of the day's cultural entertainment.



## Victoria Quarter

0.3 miles - 8 mins walk

Victoria Quarter is the historic district of Victoria Leeds, one of the UK's leading premium retail, leisure and F&B destinations.



## Culinary Scene

- Ivy Asia – A Leeds must.
- Michelin-starred dining – Treat yourself to a fine-dining experience.
- Local Cafés & Bars – Explore independent gems around the town centre.



## Shopping

0.8 miles - 6 mins walk

Head to the Victoria Quarter for unique finds and boutiques to explore, or the Trinity Shopping Centre for high-street favourites.

Kirkgate market is a must-visit during the festive season.

*We hope you enjoy  
your stay with us!*

*Let's get in touch*



[www.luxusproperties.co.uk](http://www.luxusproperties.co.uk)  
[info@luxusproperties.co.uk](mailto:info@luxusproperties.co.uk)